

KEY FEATURES

- TS – 3040 Vision is the latest model of tool pre-setter with Ashwini image processing system
- X & Z axis movement is on precision recirculating linear ball bearing guide ways
- Spindle runs on super precision angular contact preloaded spindle bearings
- Measurement of X and Z axis is by digital scale with 0.001mm resolution
- Tool tip angle and radius are displayed automatically
- Pneumatic slide clamping system ensures the position of the slide
- Spindle taper is normally ISO / BT System with adaptor for ISO / BT / HSK / CAPTO
- Spindle braking system is provided to avoid the spindle movement during the adjustment of the tool
- Spindle with basic HSK system can also be provided as optional. Power clamping of tool holder can be provided as optional
- RS 232 and USB ports are provided for documentation and for data transfer
- 999 reference and Unlimited tool data can be stored

OPTIONAL

- Thermal Label Printer
- Quick adaptor for ISO / BT / HSK / CAPTO
- Front illumination for tool tip inspection
- Post Processor Software



ADAPTERS



MANDREL



PRINTER

About Us

Ashwini Engineering is the leader in Tool Presetters in India and about 400 machines are working in leading engineering industries all over India. Ashwini Engineering Industries was established in 1983. The manufacturing range consists of Tool Presetters, Special Purpose Machines, High Precision Spindles and Precision Assemblies. Started manufacture of Tool Presetters in 1990 under Technical collaboration from M/s.Kyoritsu Seiki Corporation – Japan, who are the pioneers in Tool Presetters.



Ashwini Engineering Industries

B-205, 5th Main, 2nd Stage, Peenya Industrial Estate, Bangalore - 560 058. India

Ph: +91 80 2836 0322 / 2836 1145

Fax: +91 80 2836 0721

Email: info@ashwiniengg.in

www.ashwiniengg.in

TS-3040 Vision

TOOL PRESETTER with
IMAGE PROCESSING SYSTEM



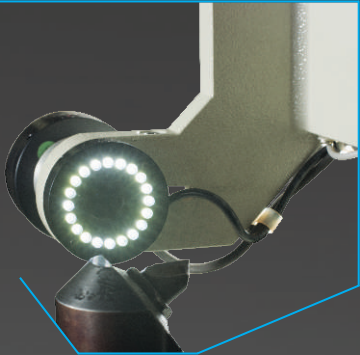
ASHWINI ENGINEERING INDUSTRIES



SPINDLE



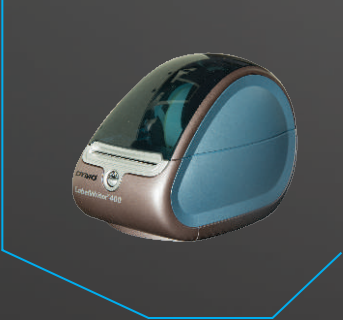
CAMERA WITH TELE CENTRIC LIGHT SOURCE
AND INCIDENT LIGHT



DISPLAY



LABEL PRINTER



Measuring Range		Main Reading Value	
X – Axis	0 – 400 / 600 / 800 mm Dia	X – Axis	0.002 mm / Dia
Z – Axis	0 – 400 / 500 / 600 / 800 mm	Z – Axis	0.001 mm
Spindle Taper	BT / ISO / HSK (Optional)	Tool Clamp	Vacuum Power Clamp (Optional)
Spindle Accuracy	0.002 mm	Power	AC 220 V
		Weight	180 - 500 Kgs Approximate

TECHNICAL HIGH LIGHTS

- ▶ Lenear scale with 0.001 mm resolution and incremental measuring system
- ▶ Precision linear motion guides for both axis movement
- ▶ Spindle movement on super precision angular contact spindle bearings
- ▶ Pneumatic clamping system for both axis
- ▶ Pneumatic spindle breaking system
- ▶ One hand operation of x and z axis movement
- ▶ Infinite micro adjustment
- ▶ Tool clamping: Pneumatic vacuum (standard), Power clamping (optional)

IMAGE PROCESSING

- ▶ CMOS – Camera with Tele Centric Light Source
- ▶ 19.5” TFT Color Monitor (Touch Screen Optional)
- ▶ Automatic measurement of tool dia, length, cutting edge radius and angles
- ▶ Fixed and dynamic cross hair
- ▶ 999 reference zero points
- ▶ Unlimited Tool Library
- ▶ Front illumination of cutting edge for tool wear inspection (optional)
- ▶ RS 232 Post for DNC Tool Data Transfer
- ▶ 4 - USB Posts
- ▶ Post Processor Data Transfer Directly to the machine (optional)
- ▶ Automatic illumination setting
- ▶ Automatic cutting edge shape direction